

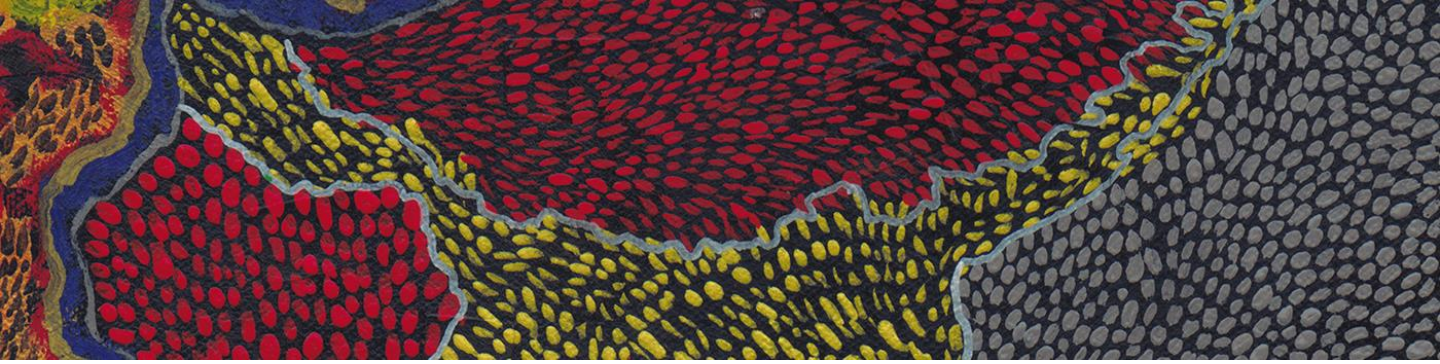


ERIC BLIN

PRESS  
BOOK

Update: 11-2024





## Index

The Artist.....	3
His Universe.....	12
Events.....	62
Press Contact.....	65

# THE ARTIST





*“My technic of pointillism is a pictorial technic that encourages the eye and the mind to melt and assimilate the dotes of color in a wider chromatic range.”*

# THE ARTIST



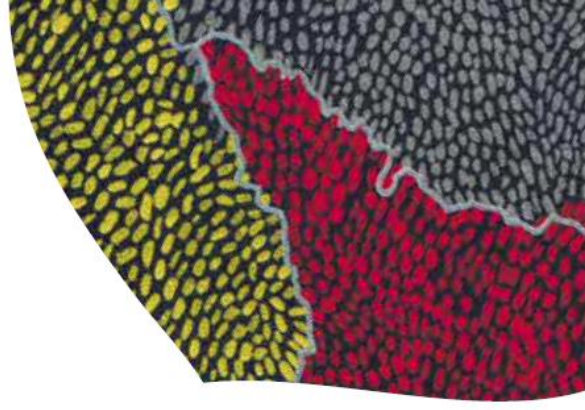
ERIC BLIN

# THE ARTIST



ERIC BLIN

# THE ARTIST



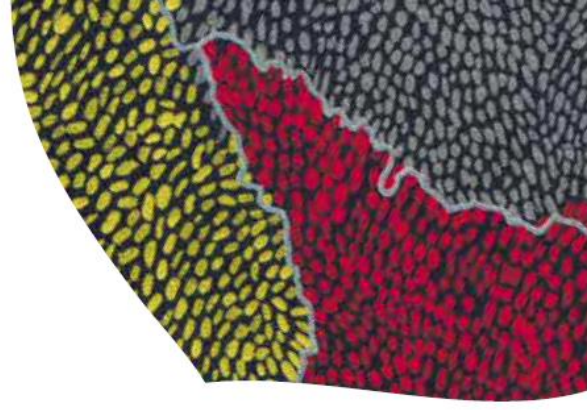
**Eric Blin** is a Parisian Artist who has spent many years abroad before returning to France in 2018.

After starting in the field of Fashion, Eric is a multidisciplinary contemporary artist who explores through dreamlike tunes, cartography or textile prints, the fragility of the cells of the human body and other nervous tissues.

Its relief effects inspired by pointillism reflect his affection for textile embroidery, such as a cellular embroidery characteristic of the human body capturing for a moment, a feeling, an emotion.

It is through this wide creative spectrum that Eric likes to share and paint his vision of the world transgressed by his inclination for the abstract.

# THE ARTIST



It is a relatively original approach since the successions of dots affixed to the canvas allow taking a distance to see the birth of a true work often inspired by aboriginal Art.

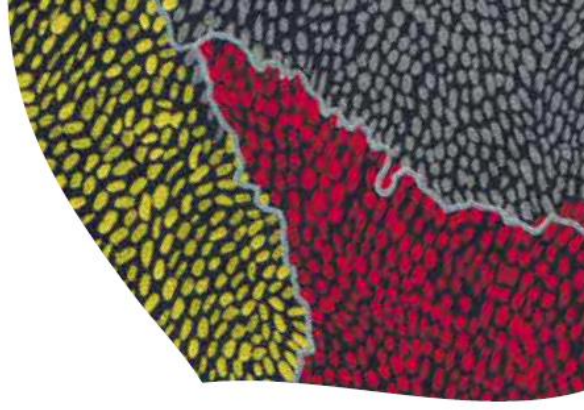
Contemporary Aboriginal painting emerge in the nineteen-seventies thanks to aboriginal painters who decided to share on the flat surfaces representations of the sacred legends of their people.

Inspired by the latter Eric concludes: “my Art relates to time, body and spirit in a kind of microscopic legend where the infinitely small and the timeless never stop to conjugate and reinvent themselves”.

A cellular dream will thus develop and expand on the canvas.



# THE ARTIST



“Best way to describe myself is that I am artistic, imaginative and innovative. I like to use my creativity to express feelings and emotions. I’m deeply focused on all kinds of arts, performance, writing and fields that refer to unusual and aesthetic styles.

I rely on my intellectual and critical thinking skills to perform my work in the most appropriate way. I’m naturally more reserved and introspective in my approach to solve problems and use my curiosity to drive original and complex developments.”

# THE ARTIST



## ● ACADEMIC BACKGROUND

**2012-2010** *Paris American Academy, Paris – France*  
“Bachelor of Arts” – Fashion Design Specialty

**2010** *Fashion University Jannette Klein, Mexico City – Mexico*  
Bachelor – Fashion Design

**2010-2007** *Ecole de Condé, Paris- France*  
BTS Fashion Design

## ● PROFESSIONAL BACKGROUND

**2015** *Lauren Baker, Home Design, Art Work, Projects and Exhibitions, London- United Kingdom*  
Designer Assistant

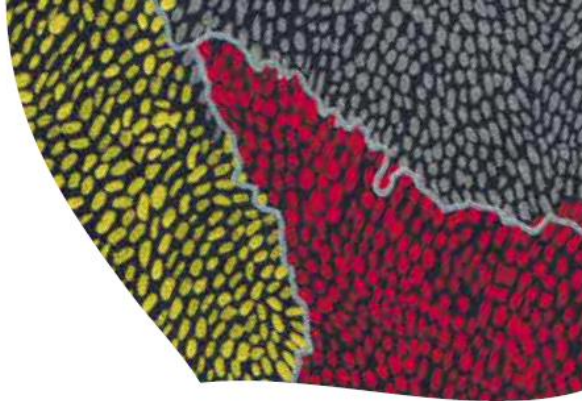
**2015** *Dragana Perisic- Prêt-à-porter Female, London- United Kingdom*  
Designer Assistant

**2014-2013** *Lulu Liu London- British Brand of Prêt-à-porter Female, London- UK*  
Designer Assistant

**2011** *Rick Owens- American Brand of Haute Couture & Prêt-à-porter Male & Female, Paris- France*  
Fashion Assistant

**2009** *George Rech – French Brand of Prêt-à-porter Female, Paris - France*  
Fashion Assistant

# THE ARTIST

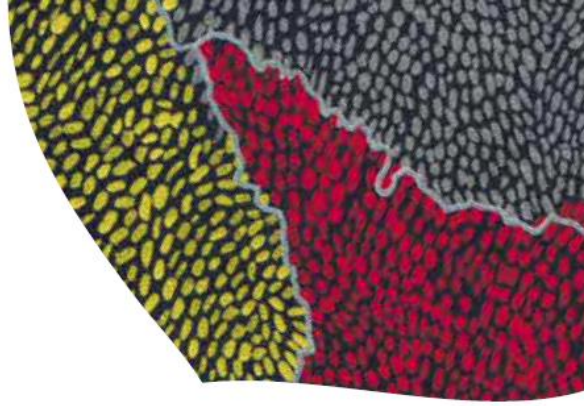


Eric has been dedicated to Plastic Arts since 2015.

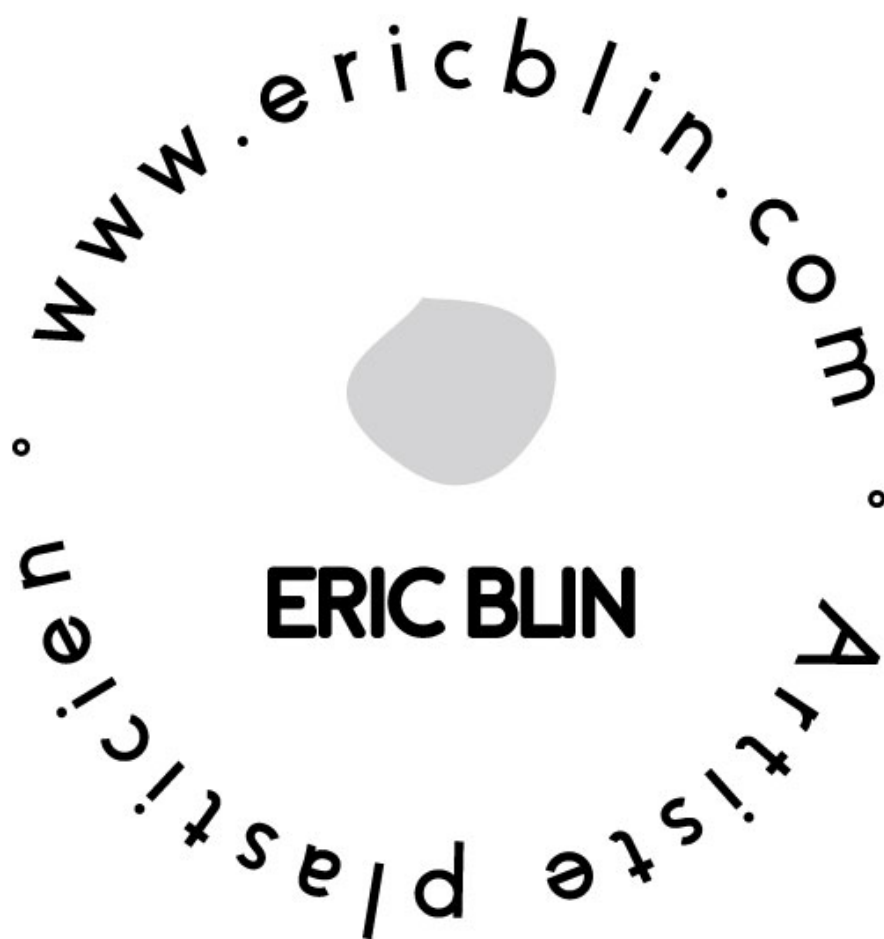
Upon his return from London in Fall 2018, he has established his workshop in the 16th District of Paris.

# HIS UNIVERSE



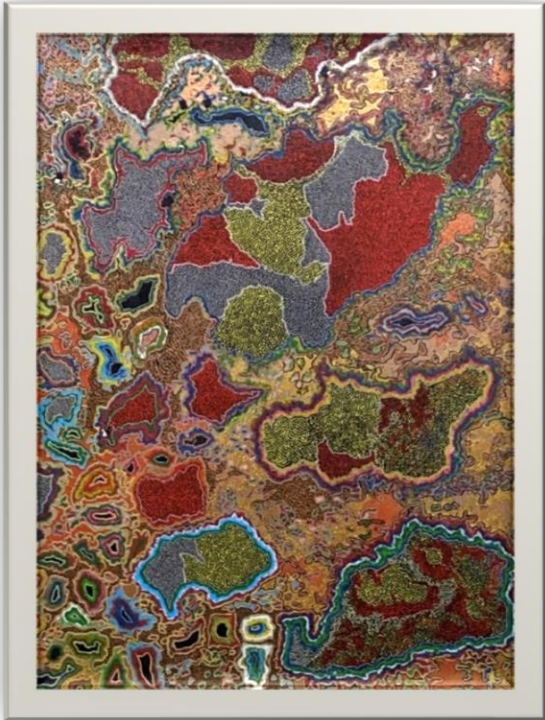
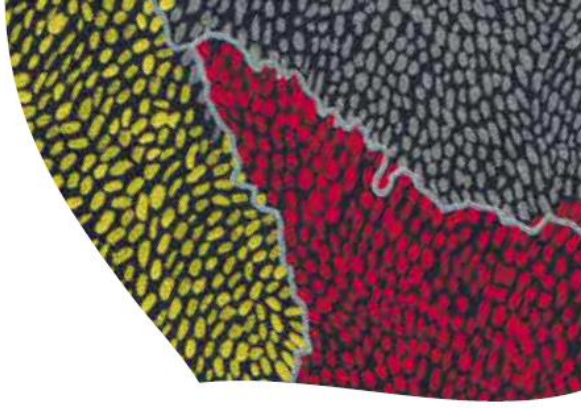


Discover Éric's universe  
onto his website:



# HIS UNIVERSE

*Large size formats*

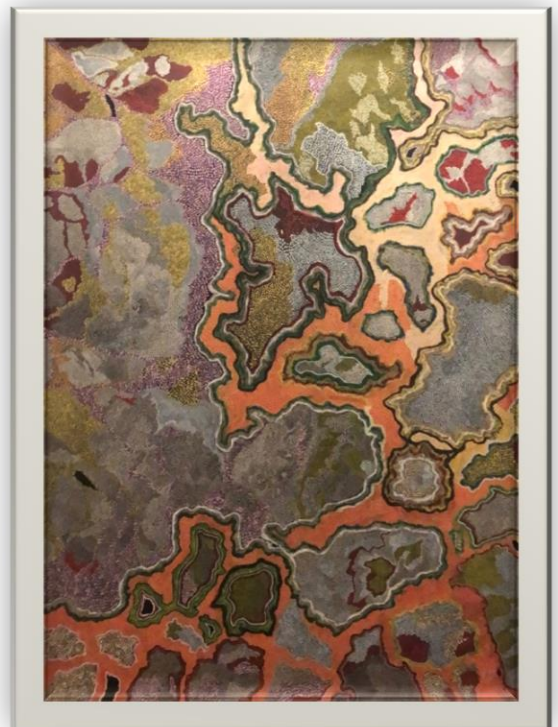


## *OSMOSIS*

Perfect  
communication  
of the symbiotes

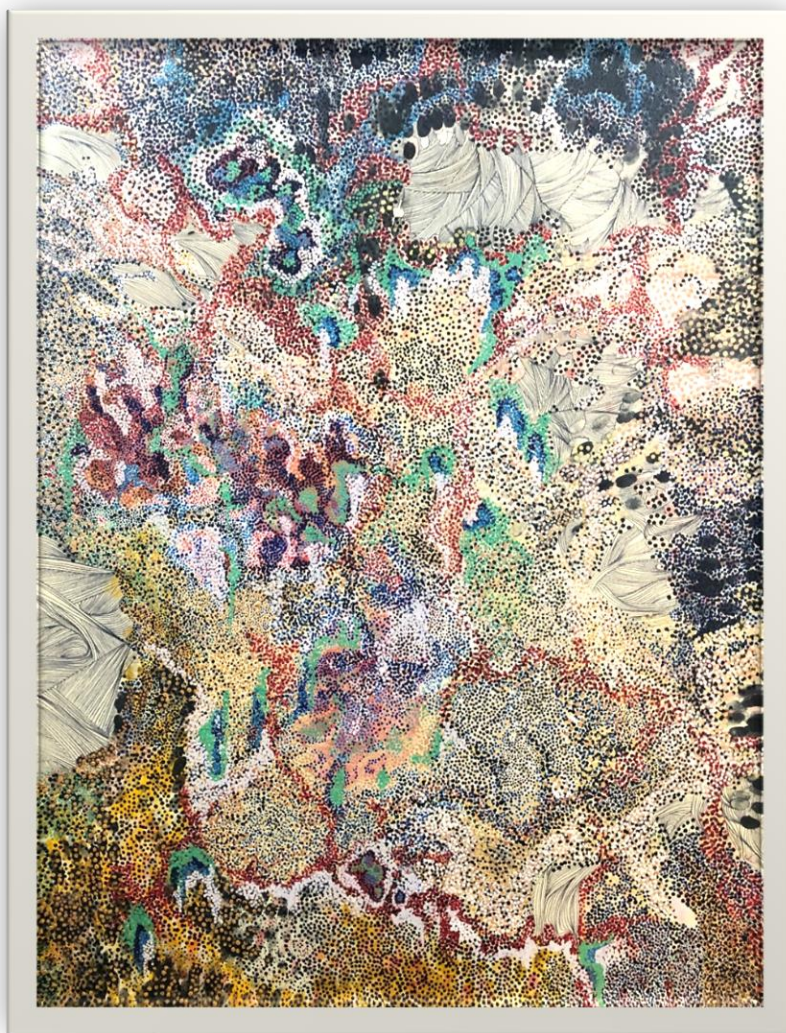
## *SYMBIOSIS*

Intimate and lasting  
association  
of the symbiotes



# HIS UNIVERSE

*Large size formats*



## *BLOSSOM*

When the season is coming,  
they reveal themselves

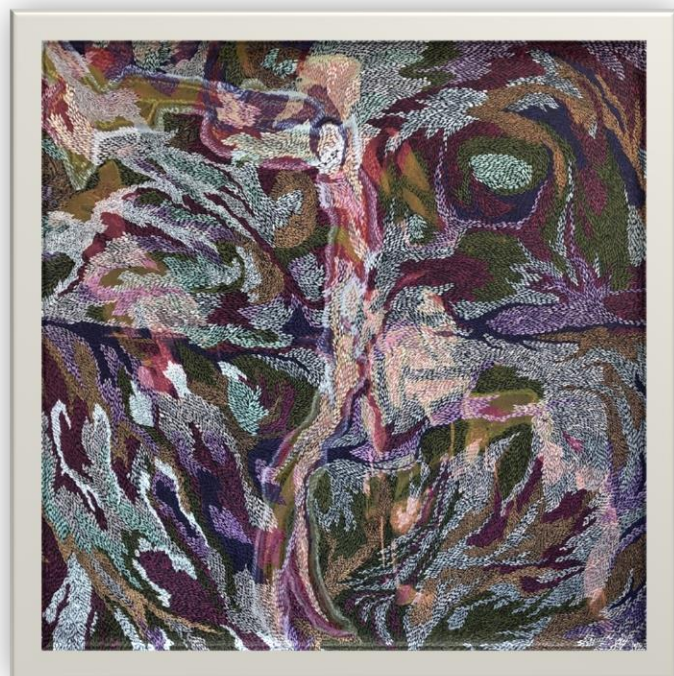
# HIS UNIVERSE

*Large size formats*



**CASHMERE**

Textile  
nostalgia



**BROCELIANDE**

Myth  
takes form



# HIS UNIVERSE

*Large size formats*

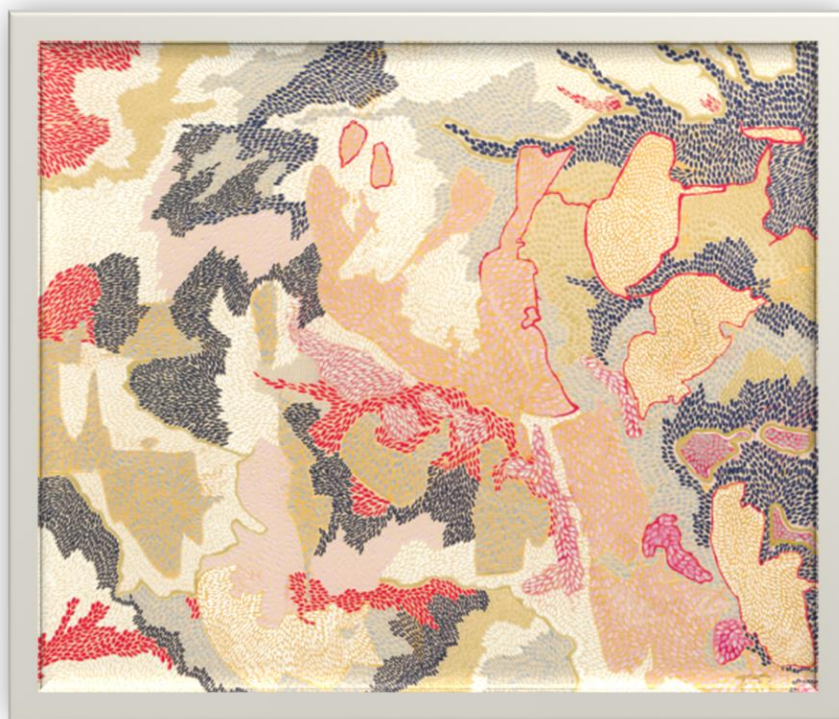


**ACME**

Peak of a philosophical thought

# HIS UNIVERSE

*Large size formats*



**LAVA**

Static  
river

# HIS UNIVERSE

*Large size formats*

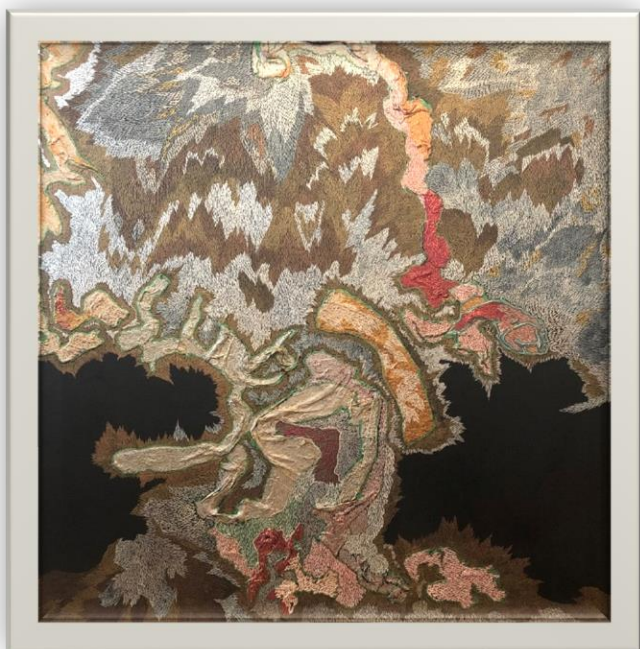
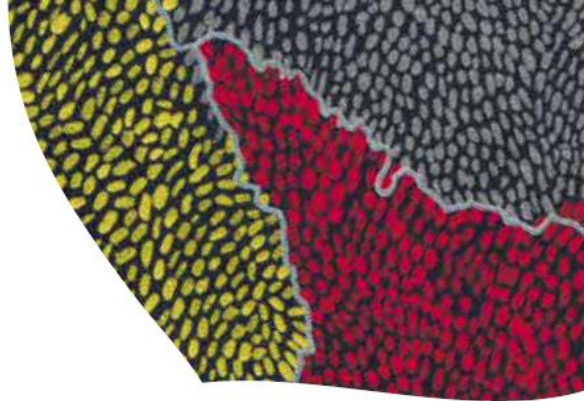


***ELYSEUM***

Final destination

# HIS UNIVERSE

*Large size formats*



## ***SHADES***

In the dark,  
They reveal themselves  
and dance



## ***SHADES 2.0***

Land Fracture,  
Pangea Fracture

# HIS UNIVERSE

*Large size formats*

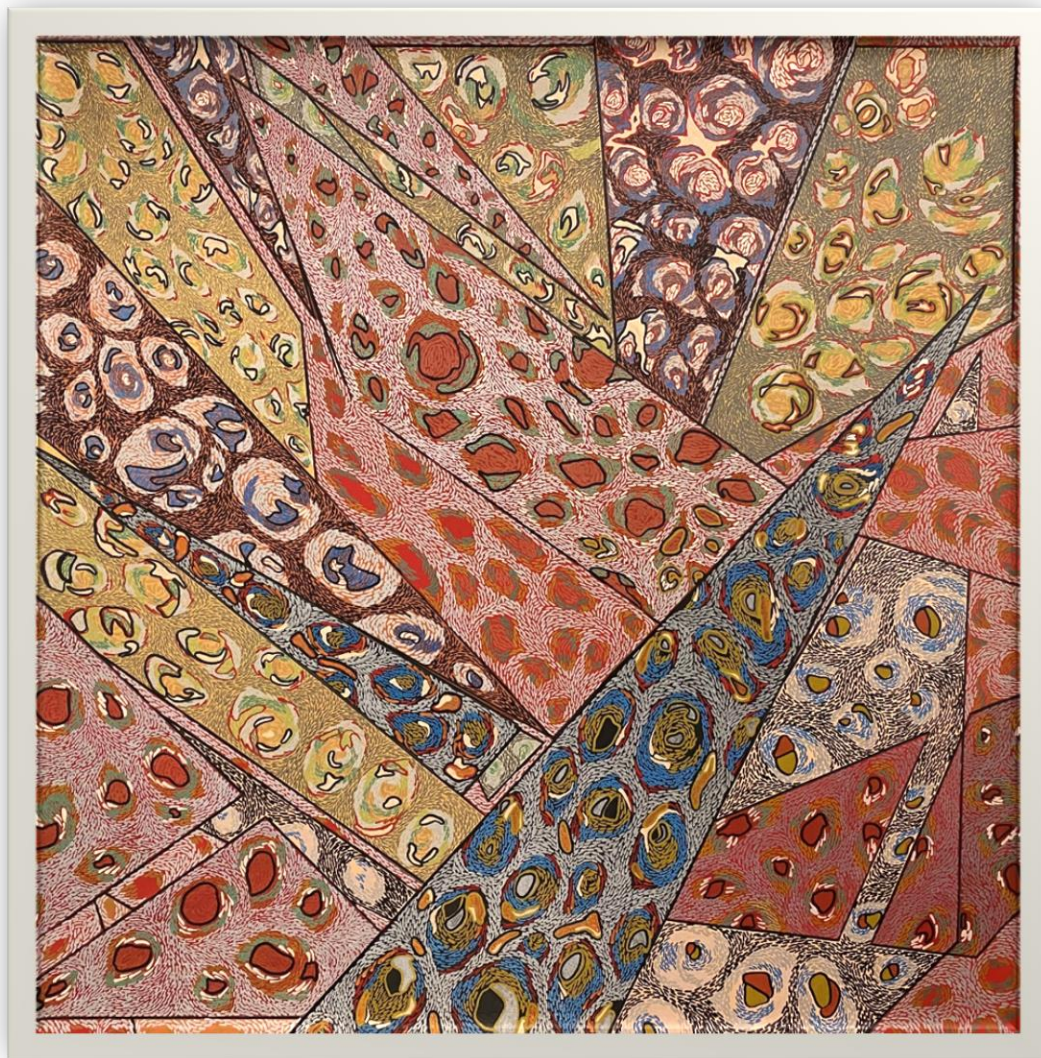


***SYNAPSE***

Chemical  
connection

# HIS UNIVERSE

*Large size formats*

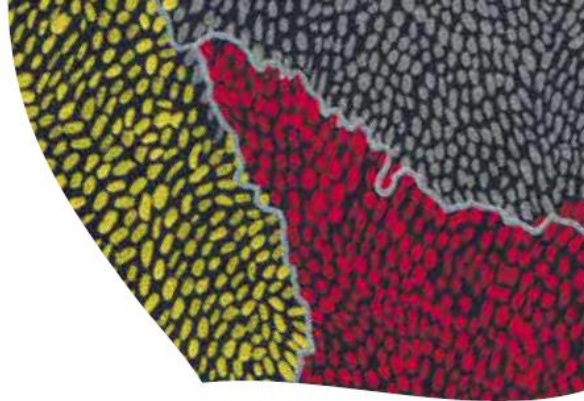


**ARGOS**

Ocular lace

# HIS UNIVERSE

*Large size formats*



*KOÏ*

Empowerment

*FIBER PHILLY*

Cerebellum



# HIS UNIVERSE

*Large size formats*



**COBALT**

Co



# HIS UNIVERSE

*Large size formats*



***KHAMAILÉON***

Shape shifters

# HIS UNIVERSE

*Large size formats*



***TYPHOON***

Awaking

# HIS UNIVERSE

*Large size formats*



*Drippy*

Slow but continuous conquest of the Space

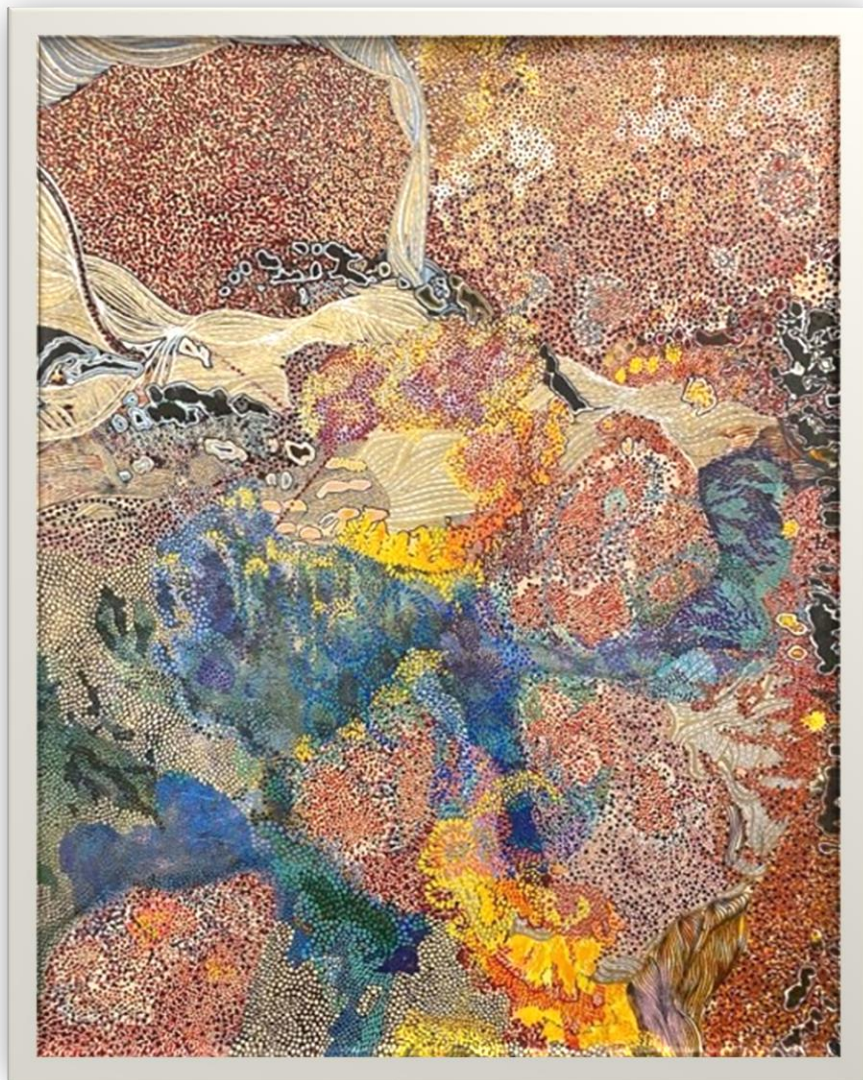
Primitive artistic approach translating the visible and the invisible.

Free and repetitive interpretation of micro-cellular lace.

“Drippy” is a finely orchestrated flood of overlapping and resembling paint drops that reveal a cascade of pastel.

# HIS UNIVERSE

*Large size formats*



*Supernova*

Beyond Space and Time

# HIS UNIVERSE

*Large size formats*

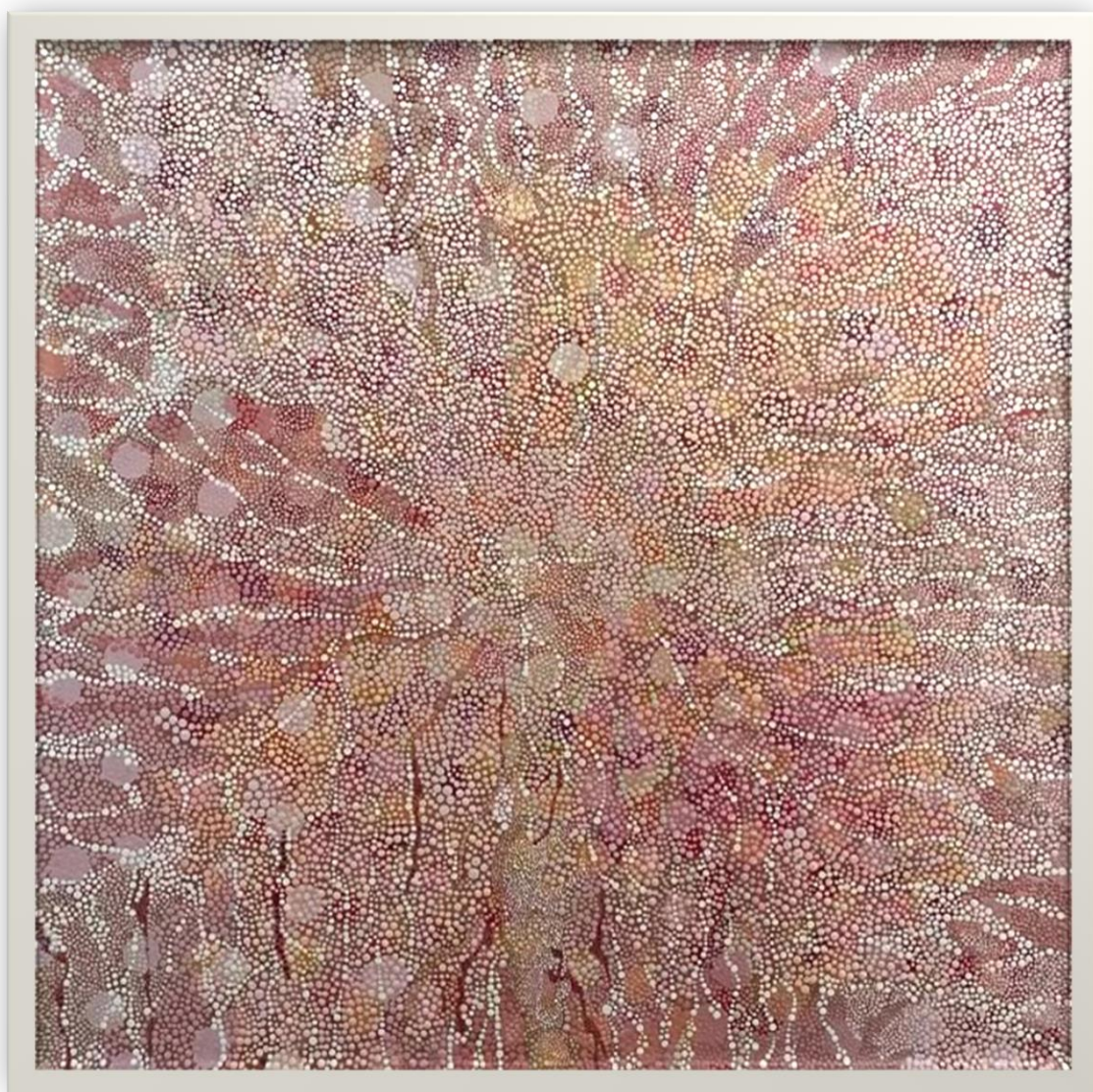


*Candide*

Faith of the Just and of Children

# HIS UNIVERSE

*Large size formats*



*Sakura*

Ephemeral character of beauty

# HIS UNIVERSE

*Large size formats*



*Secret Garden*

The quiet place behind the bushes

# HIS UNIVERSE

*Large size formats*



*Summer Night Garden*

The quiet place below the stars



# HIS UNIVERSE

*Large size formats*

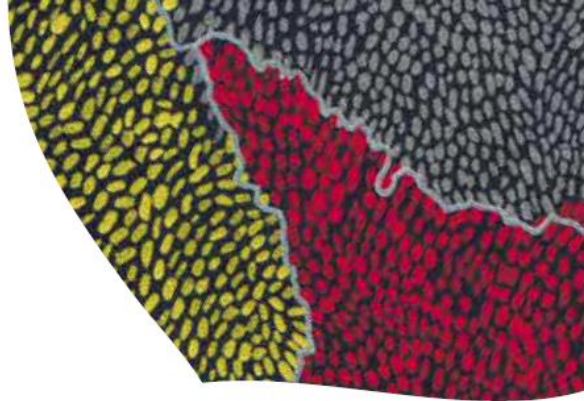


## *Epiderme*

Surface layer of aerial parts of a plant

# HIS UNIVERSE

*Large size formats*



## *Sanguine*

Ode to the family we choose

# HIS UNIVERSE

*Large size formats*



*Grapefruit*

# HIS UNIVERSE

*Large size formats*



***Chlorophylle***

Beyond the tone

# HIS UNIVERSE

*Large size formats*

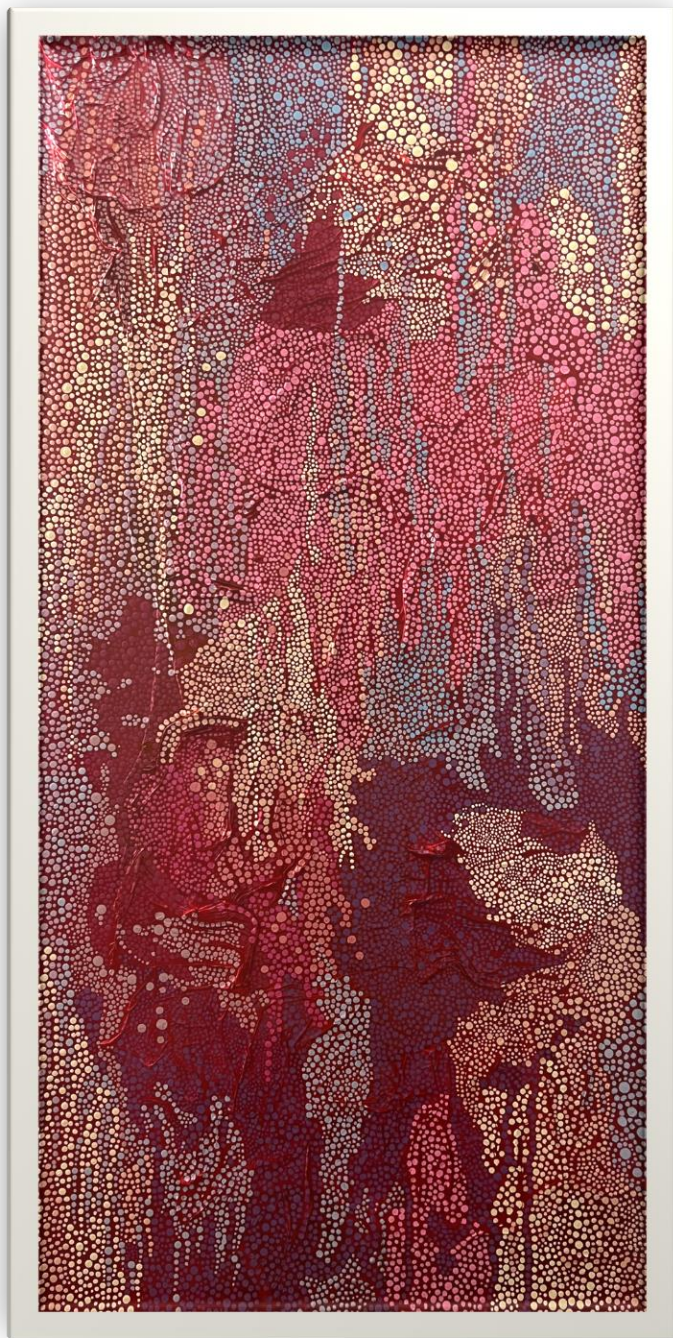


***Bloody***

Just a drop through life

# HIS UNIVERSE

*Large size formats*

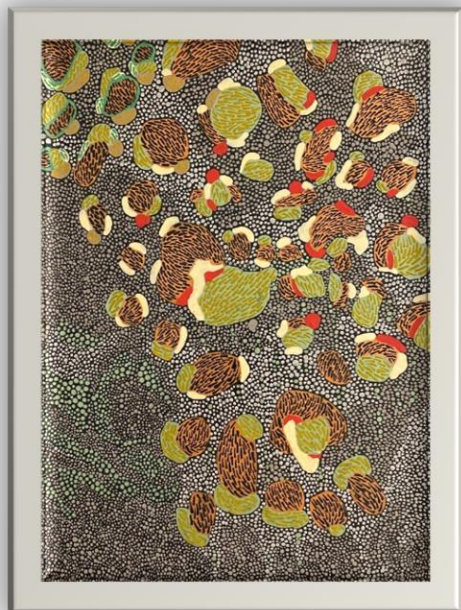


*Grappa*

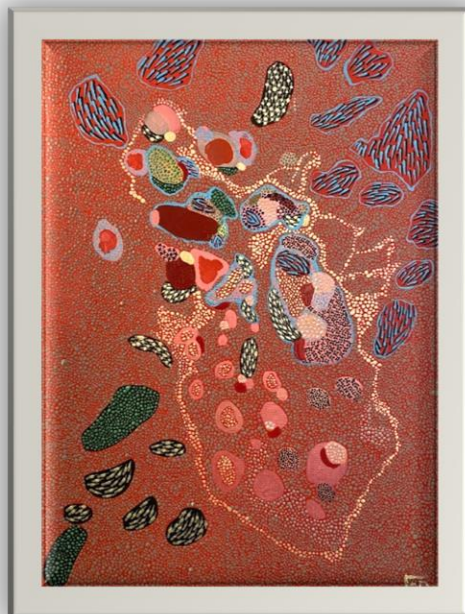
Life tasting

# HIS UNIVERSE

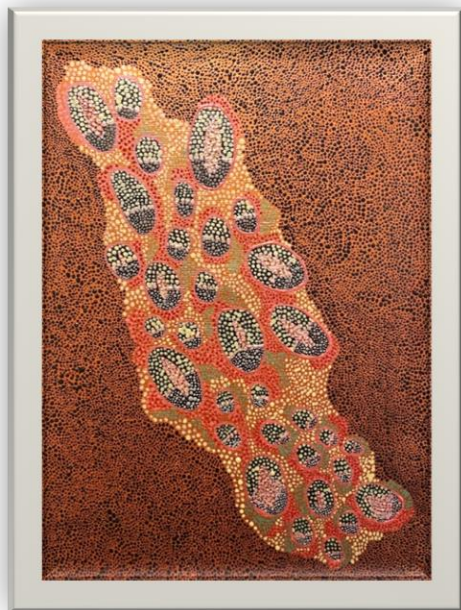
*The collection of small formats*



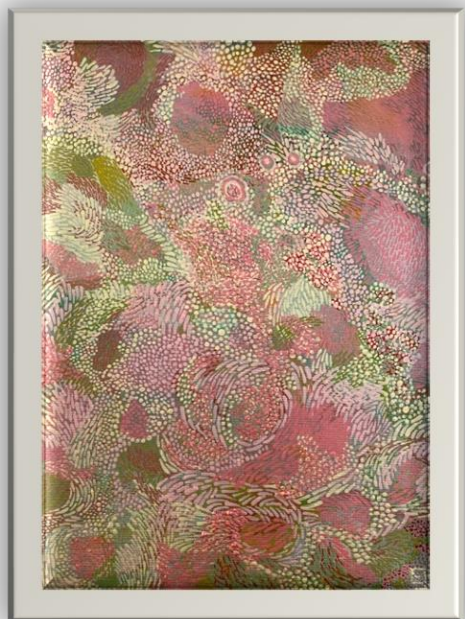
**CHESTNUTS**  
Harvest in nature



**LA DAME DE CŒUR**  
Motherly love



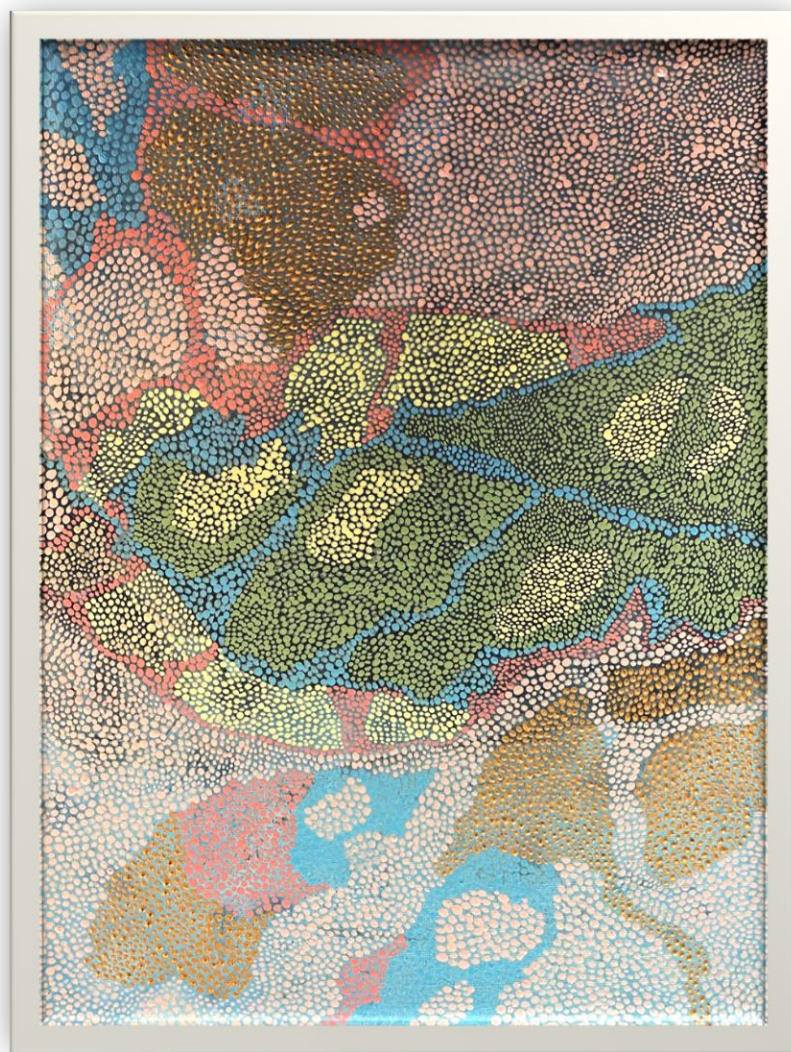
**TENTARE**  
Tentacular imprint



**POLLEN**  
Busy bee

# HIS UNIVERSE

*The collection of small formats*



*Mangrove*

Between two worlds



# HIS UNIVERSE

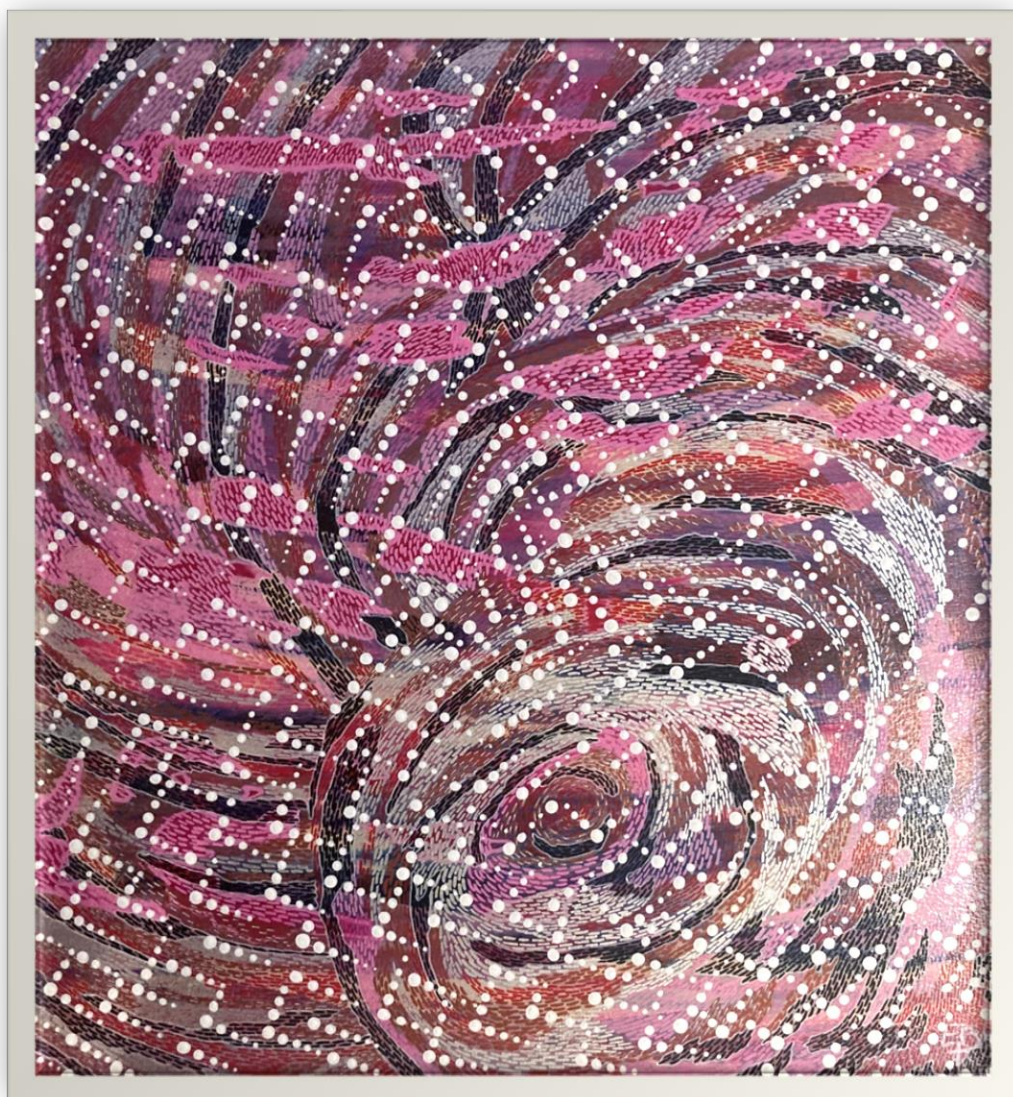
*The collection of small formats*



*Neon Coconut*  
Refreshing lights

# HIS UNIVERSE

*The collection of small formats*

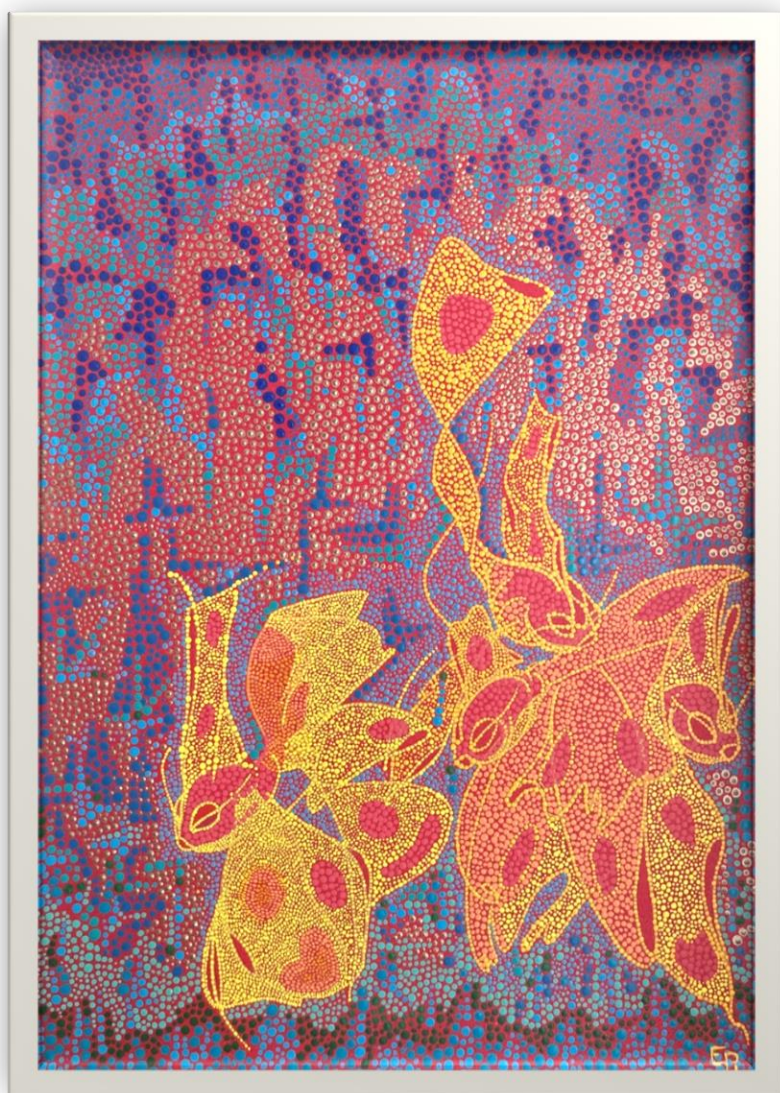


*Care Bears*

Welcome to my World

# HIS UNIVERSE

*The collection of small formats*



*Fishy*

Underwater detail

# HIS UNIVERSE

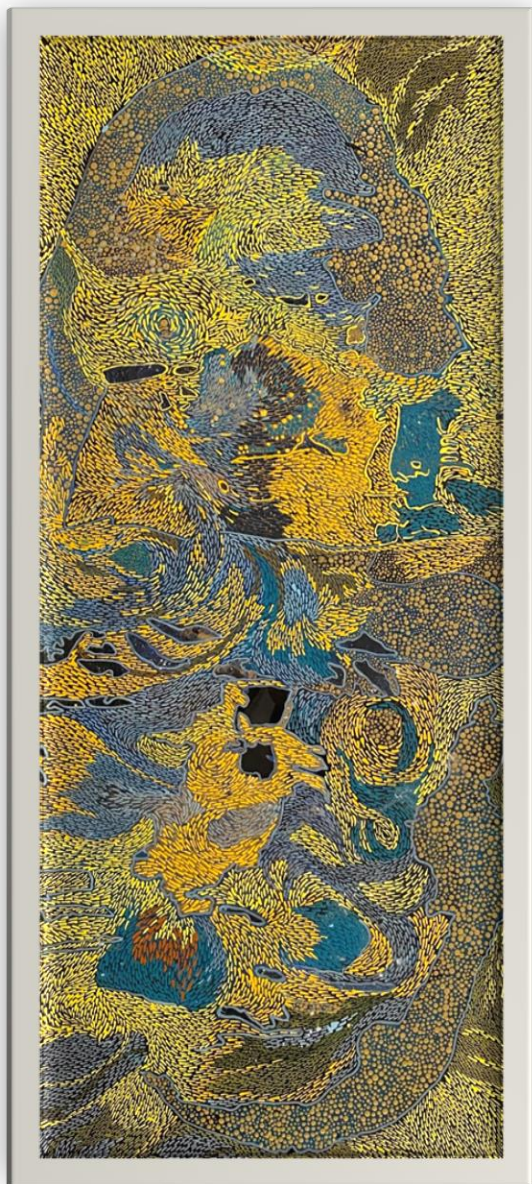
*The collection of small formats*



*Substrat*

# HIS UNIVERSE

*The collection of small formats*

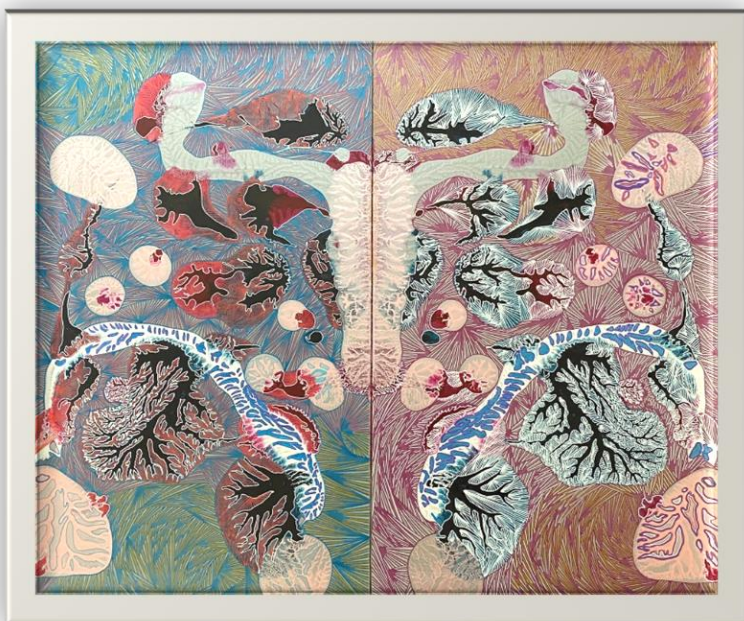
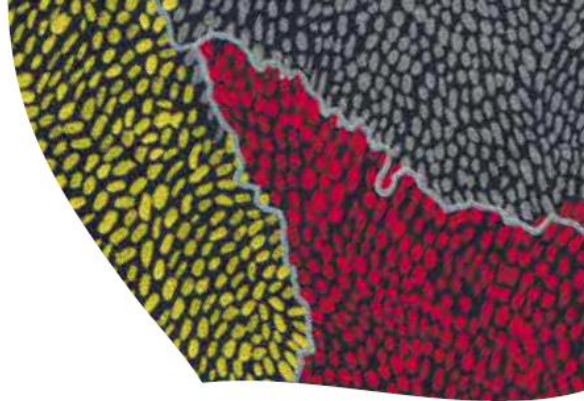


*Anemone*

Actinoscyphia Aurelia beyond the rift

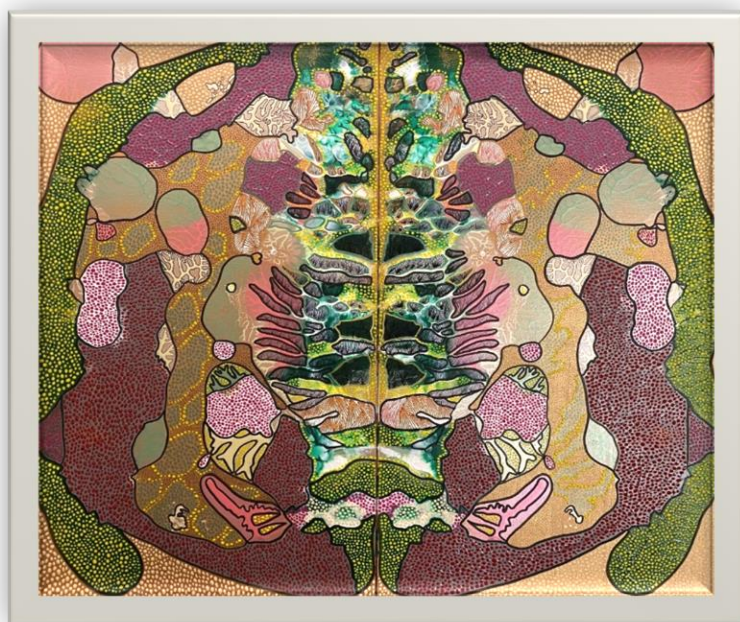
# HIS UNIVERSE

*The collection of diptychs*



***Matrice***

The origin of the world

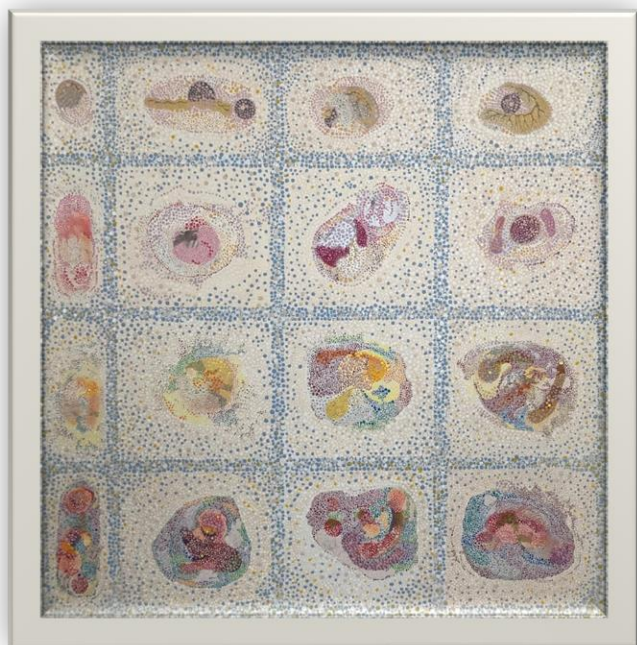
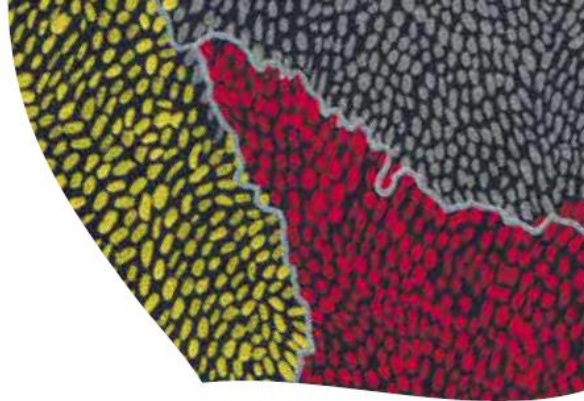


***Tortuga***

Ghost in the shell

# HIS UNIVERSE

*The collection of diptychs*



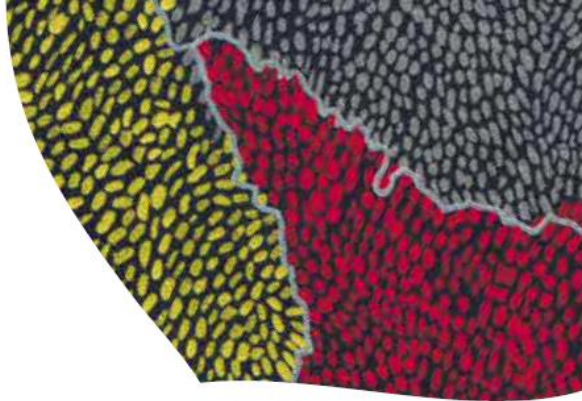
*Asteroids*

*Cellules*

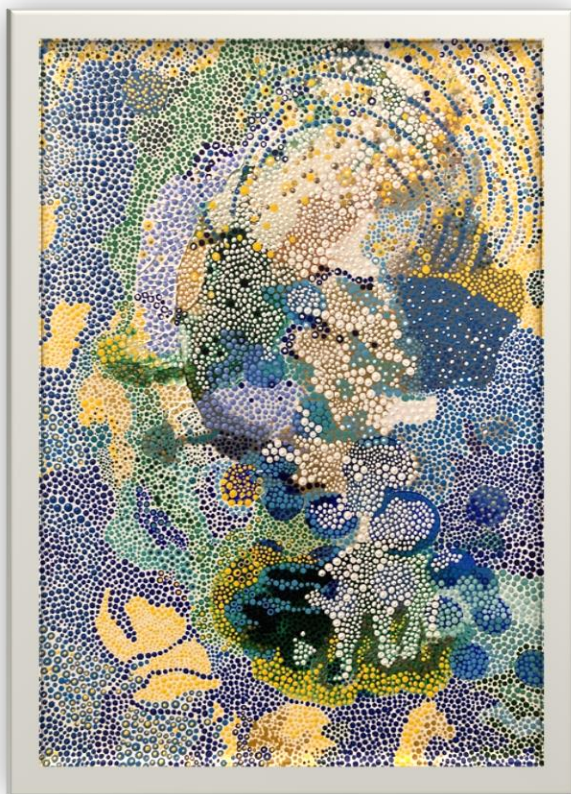


# HIS UNIVERSE

*The collection of diptychs*



*Waves*



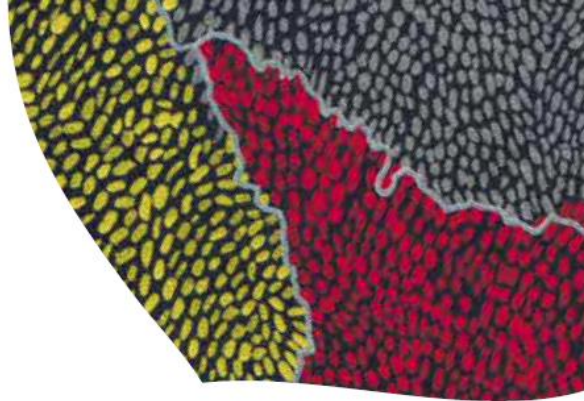
*Cadran lunaire*

A wave that retreats, tearful against the sand,  
to the rhythm of the lunar calendar...



# HIS UNIVERSE

*The collection of diptychs*



*Nebula*

Ascending

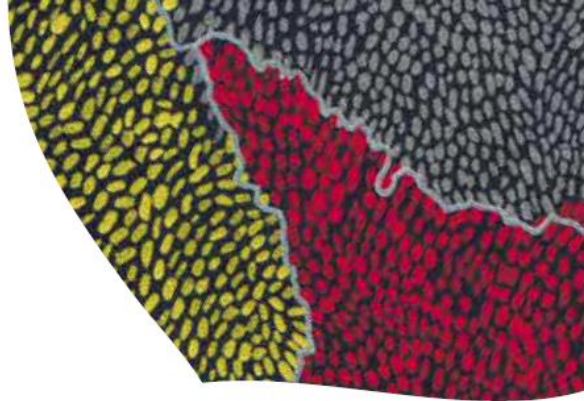


*Nebula 2*

Descending

# HIS UNIVERSE

*Small ones*



***METEOR***

Galactic  
trip



***COSMOS***

Celestial  
order

# HIS UNIVERSE

*Small ones*



**PEARL**

Wild  
mother of pearl



**SKIN**

Molting

# HIS UNIVERSE

*Small ones*



***INTO THE WOODS***

Wall relic

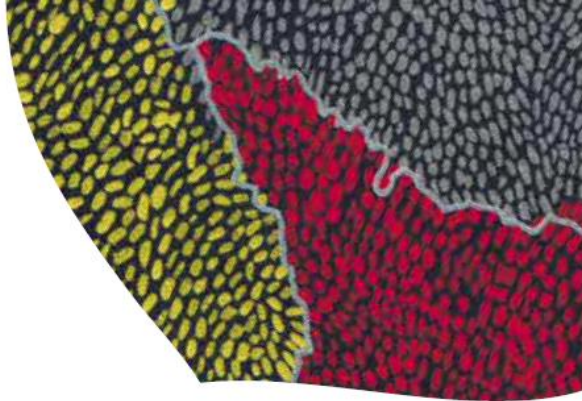


***INTO THE WILD***

Floral relic

# HIS UNIVERSE

*Small ones*

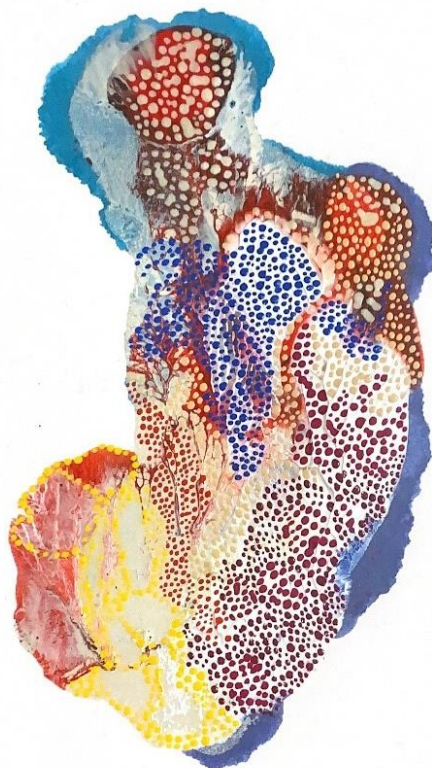
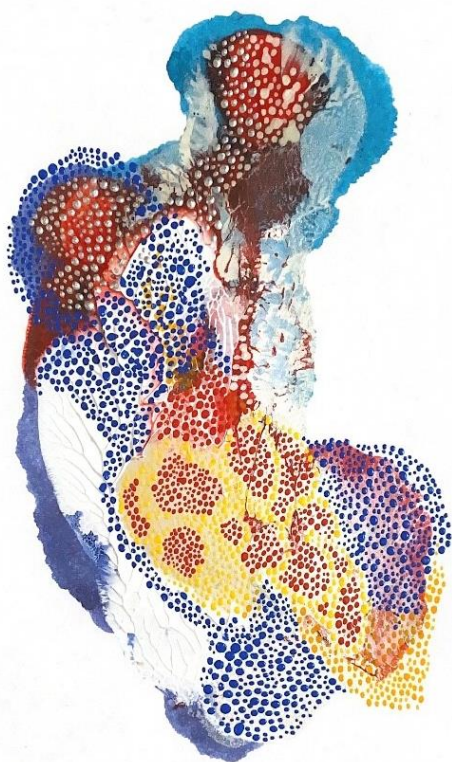
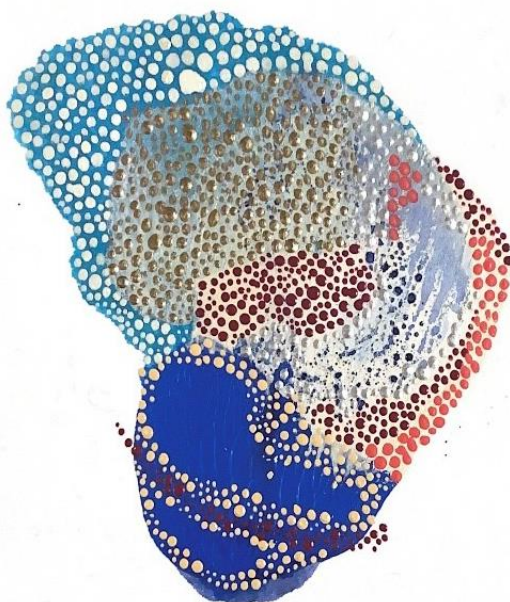
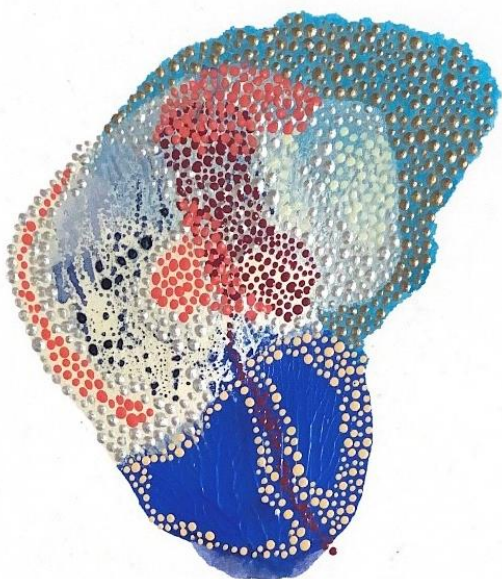
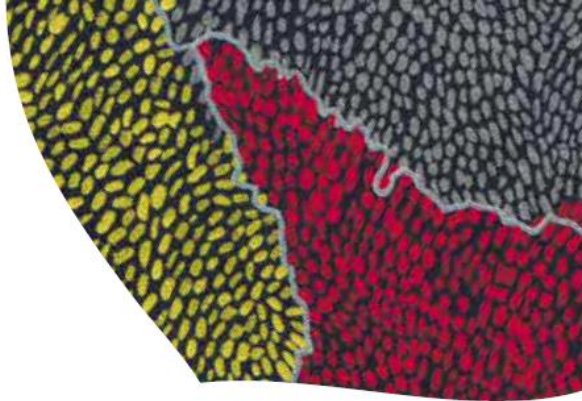


***BY THE LAKE***

Static lake

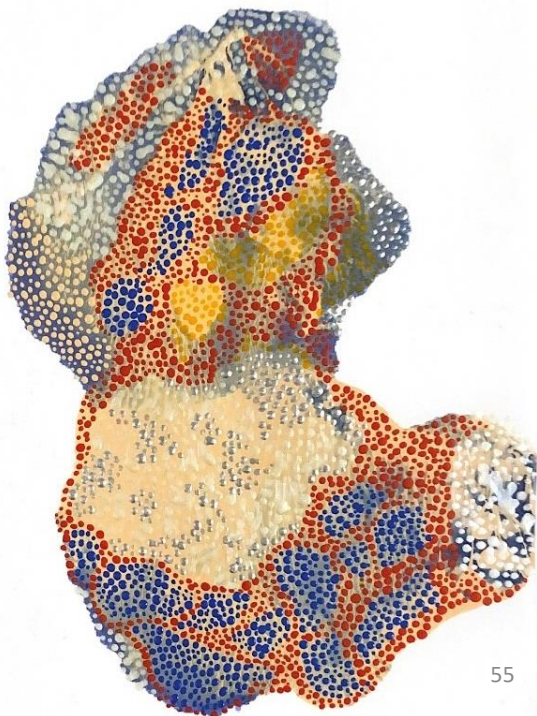
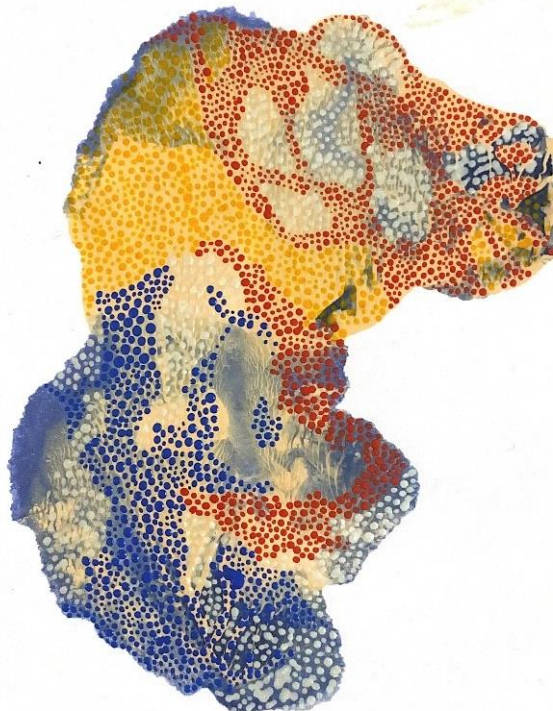
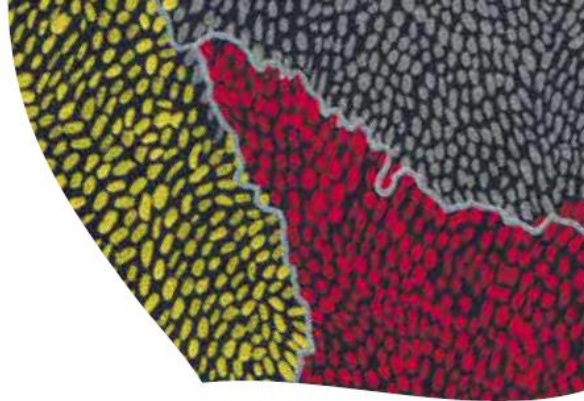
# HIS UNIVERSE

*Drawing from "Variation" series*



# HIS UNIVERSE

*Drawing from "Variation" series*



# HIS UNIVERSE

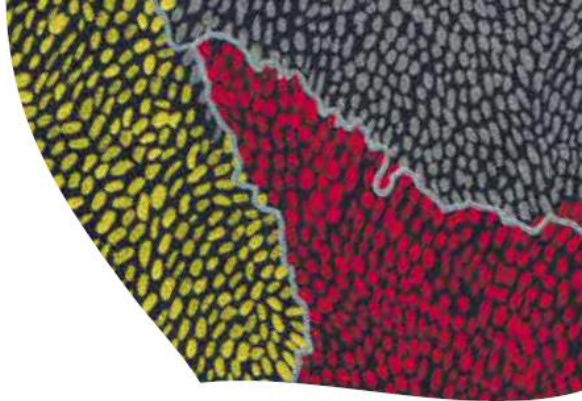
*Drawing from "Archipelagos" series*





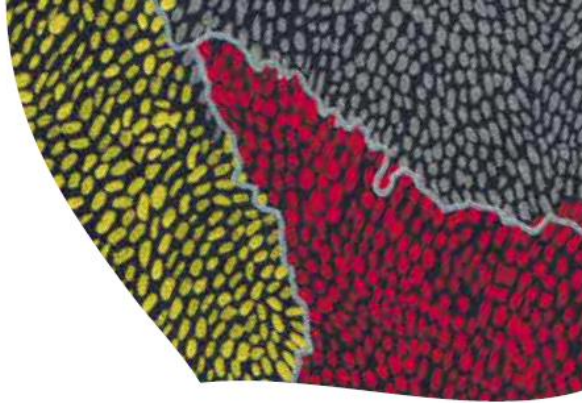
# HIS UNIVERSE

*Drawing from "2024 Variations" series*



# HIS UNIVERSE

*Messaging...*



# HIS UNIVERSE

*Objects*



**NEOPLASM**

Table

# HIS UNIVERSE

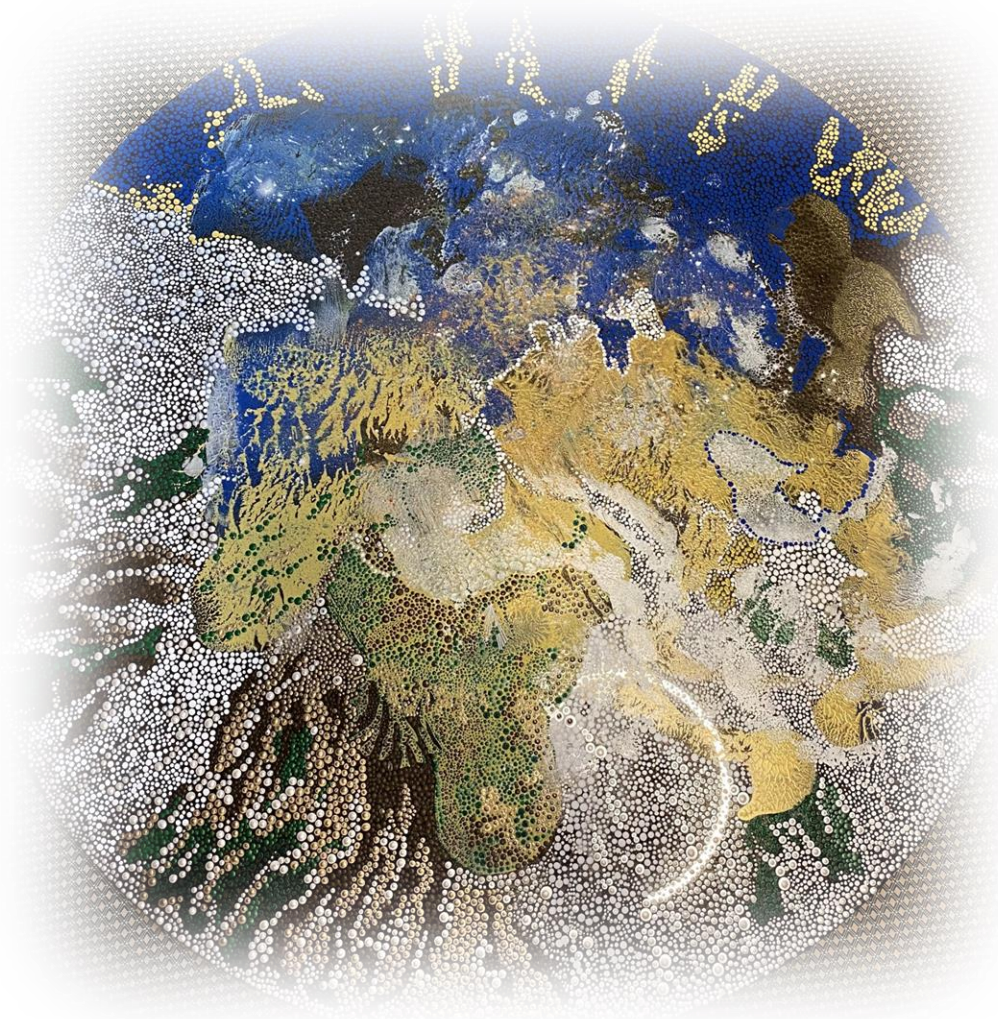
*Objects*



***RECIFE***

# HIS UNIVERSE

*Objects*

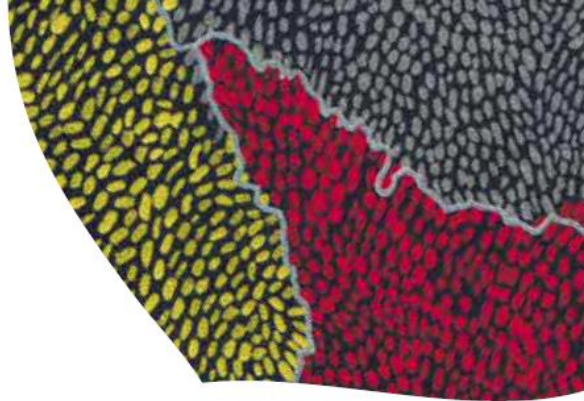


***EARTH***

# EVENTS



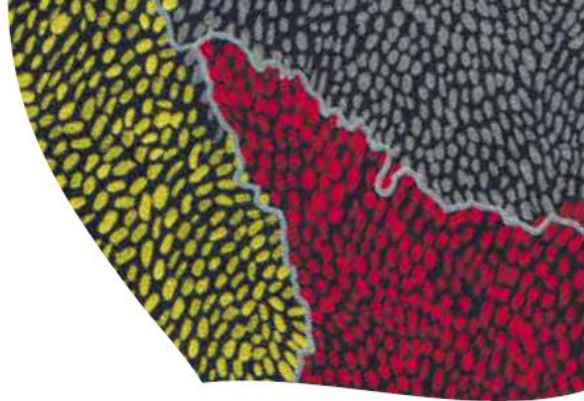
# EVENTS



## ● EXHIBITIONS

- 2025 Individual Exhibition – Printemps de Bourges – April 2025 (to come)
- 2024 Paris « Salon d’Automne » (121st edition) – October 2024
- 2024 6th Contemporary Art Biennale in Versailles, France
- 2024 Exhibition at Town Hall, Viroflay, France
- 2023 Paris « Salon d’Automne » (120th edition) – January 2024
- 2023 Exhibition Seiziem’Art, Group of Artists of Paris 16th District
- 2023 Exhibition at Nivillers Art Fair, France - Guest of Honor
- 2023 Exhibition « Seiziem’Art » at Paris Town Hall in 16th District
- 2023 Exhibition at “Cercle des Artistes de Paris », Parc floral de Paris
- 2023 Paris « Salon des Artistes Français » at Grand Palais Ephémère
- 2022 Exhibition Seiziem’Art at « Point du Jour », Paris 16th District
- 2022 Paris « Salon d’Automne » (119th edition)
- 2022 Exhibition in Nivillers, France, 1st Painting Prize
- 2022 5th Contemporary Art Biennale in Versailles, France
- 2021 Paris « Salon d’Automne » (118th edition)

# EVENTS



## ● EXHIBITIONS

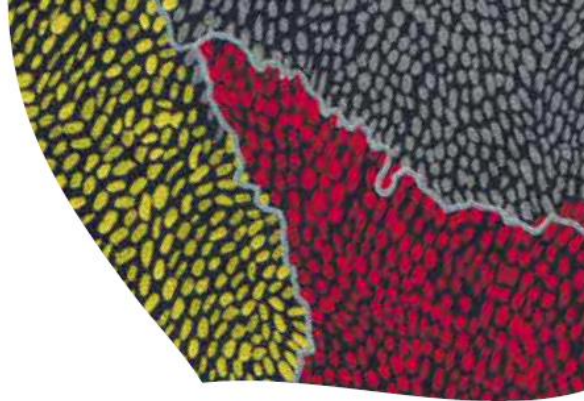
- 2020** Paris « Salon d'Automne » (117th edition)
- 2020** 4th Contemporary Art Biennale in Versailles, France
- 2020** « Roz & Winkler » Gallery in Barbizon, France
- 2019** « Au Daume » Gallery, Paris, 1<sup>er</sup> Painting Prize
- 2019** « Seizièm'Art » Exhibition –Group of Artists of the 16th District, Paris
- 2019** Exhibition at « La Dodane » Gallery, Amiens, France
- 2019** Exhibition at Nivillers Art Fair, France, 1st Painting Prize
- 2019** Exhibition at the Flesselles Castle, France, 1st Painting Prize
- 2018** Exhibition in Saint-Paul, France – Audience Prize



# PRESS CONTACTS

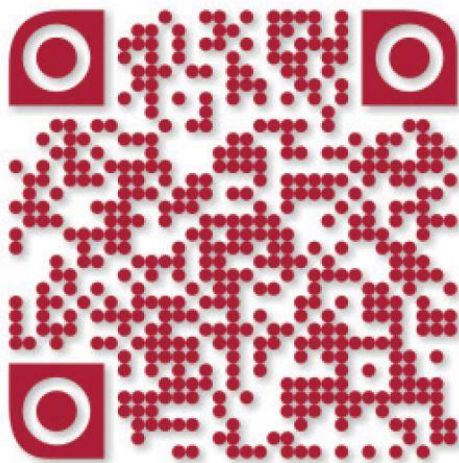


# PRESS CONTACT

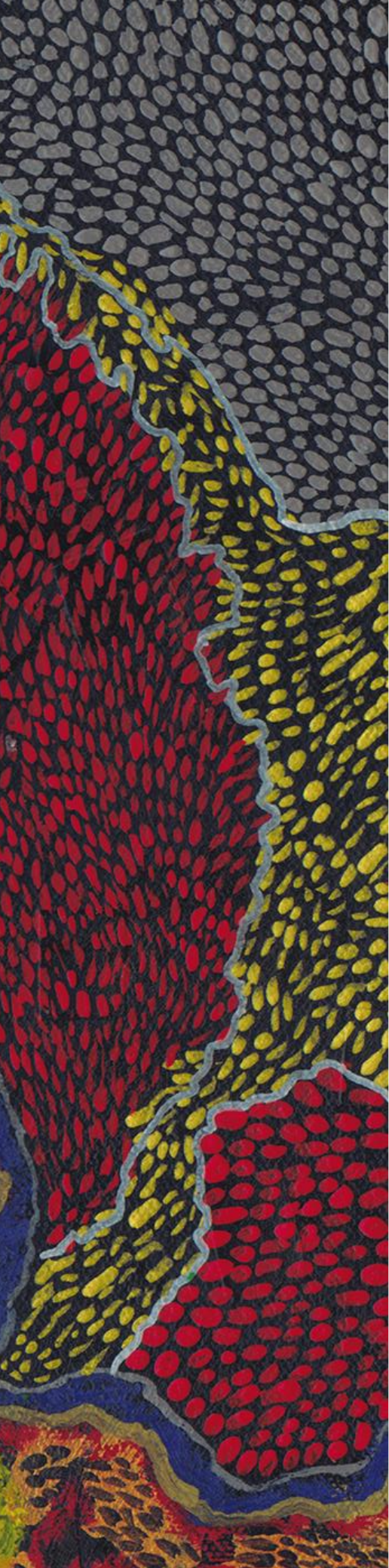


Workshop at 7 rue du Général Appert, 75116 Paris  
(upon appointment)

00 (33) 7 70 22 50 30  
[eric@ericblin.com](mailto:eric@ericblin.com)



 ERIC BLIN



[www.ericblin.com](http://www.ericblin.com)